

# USING TETRACHORDS TO MAKE SCALES

CAMDEN HUGHES

## BASIC TETRACHORDS

MAJOR TETRACHORD 1234

MINOR TETRACHORD 12 $\flat$ 34

PHRYGIAN TETRACHORD 1 $\flat$ 2 $\flat$ 34



WHOLE TONE TETRACHORD 123 $\sharp$ 4

DIMINISHED TETRACHORD 1 $\flat$ 2 $\flat$ 3 $\sharp$ 3

HARMONIC TETRACHORD 1 $\sharp$ 234



MIXOLYDIAN BLUES TETRACHORD 12 $\flat$ 3 $\sharp$ 3

BLUES 1 TETRACHORD 1 $\flat$ 34 $\sharp$ 4



BLUES 2 TETRACHORD 1 $\flat$ 23 $\sharp$ 4

CHROMATIC TETRACHORD 1 $\flat$ 22 $\flat$ 3



## TETRACHORD SCALES (2ND TETRACHORD STARTS ON 5 OR $\flat$ 5)

MAJOR SCALE (IONIAN) - CMAJ7

DORIAN SCALE (MINOR) - CMIN7

MAJOR TETRACHORD (5) MAJOR TETRACHORD

MINOR TETRACHORD (5) MINOR TETRACHORD



PHRYGIAN SCALE (MINOR) - CMIN7 OR C7( $\flat$ 9)SUS

LYDIAN SCALE (MAJOR) - CMAJ $\sharp$ 4 OR CMAJ7 $\sharp$ 11

PHRYGIAN TETRACHORD (5) PHRYGIAN TETRACHORD WHOLE TONE TETRACHORD (5) MAJOR TETRACHORD



MIXOLYDIAN SCALE - C7 NATURAL MINOR SCALE (AEOLIAN) - CMIN7 LOCRIAN SCALE (HALF-DIMINISHED) - CMIN7( $\flat$ 5)

MAJOR TETRA. (5) MINOR TETRA. MINOR TETRA. (5) PHRYGIAN TETRA. PHRYGIAN TETRA. ( $\flat$ 5) WHOLE TONE TETRA.



USING TETRACHORDS TO MAKE SCALES

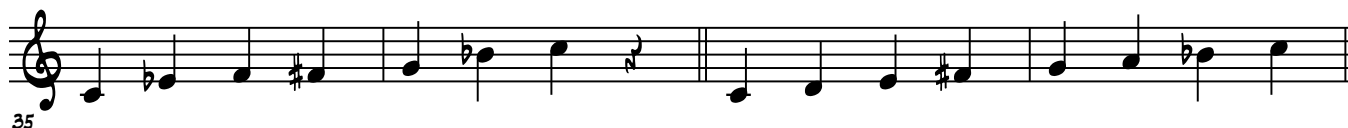
2 HALF-WHOLE DIMINISHED (DOMINANT-DIMINISHED) - C13b9      WHOLE-HALF DIMINISHED (DIMINISHED-DIMINISHED) - Cdim7  
 DIMINISHED TETRACHORD (b5) DIMINISHED TETRACHORD      MINOR TETRACHORD (b5) MINOR TETRACHORD



ALTERED SCALE (ALTERED DOMINANT) - C7(#9b13) or C7alt      WHOLE TONE SCALE - C9(b13)  
 DIMINISHED TETRACHORD (b5) WHOLE TONE TETRACHORD      WHOLE TONE TETRACHORD (b5) WHOLE TONE TETRACHORD



BLUES SCALE - C7 or Cmin7 (Tonic)      LYDIAN DOMINANT - C7(#11)  
 BLUES 1 TETRACHORD (b5) BLUES 2 TETRACHORD      WHOLE TONE TETRACHORD (5) MINOR TETRACHORD



LOCRIAN #2 (HALF-DIMINISHED, 6TH MODE OF MELODIC MIN.) - Cmin7(b5)  
 MINOR TETRACHORD (b5)      WHOLE TONE TETRACHORD



MAJOR BEBOP SCALE - Cmaj7      MINOR BEBOP SCALE - Cmin7  
 DIM. TETRACHORD (5) MINOR TETRACHORD      CHROMATIC TETRACHORD (5) PHRYGIAN TETRACHORD



DOMINANT BEBOP SCALE - C7  
 CHROMATIC TETRACHORD (5) MINOR TETRACHORD



USING TETRACHORDS TO MAKE SCALES

3

A musical staff with a treble clef on the left. A single note is placed on the second line of the staff. At the end of the staff, there is a double bar line.

47