

Bluesette

C Instruments

Jean "Toots" Thielemans

B^bmaj7

A m7(b5)

D7(b9)

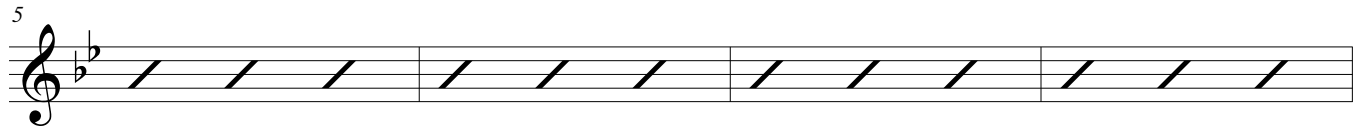


G m7

C7

F m7

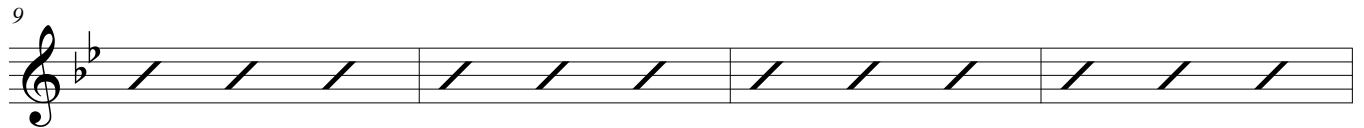
B^b7



E^bmaj7

E^bm7

A^b7

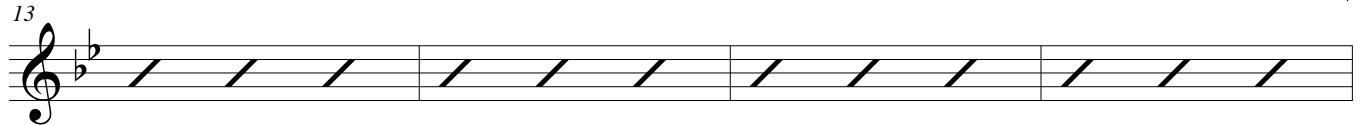


D^bmaj7

D^bm7

G^b7

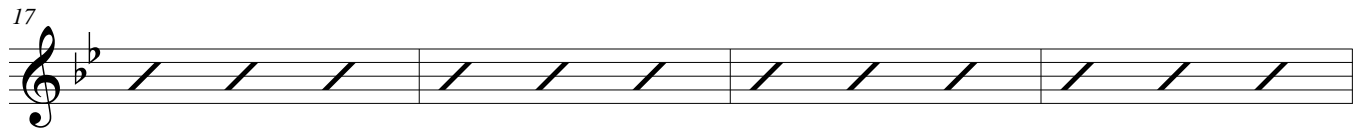
To Coda ☉



B maj7

C m7

F7



D m7

G7

C m7

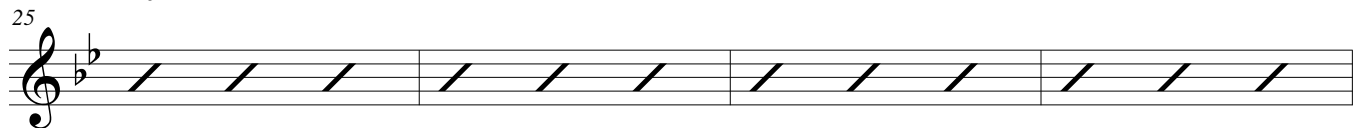
F7



☉ B maj7

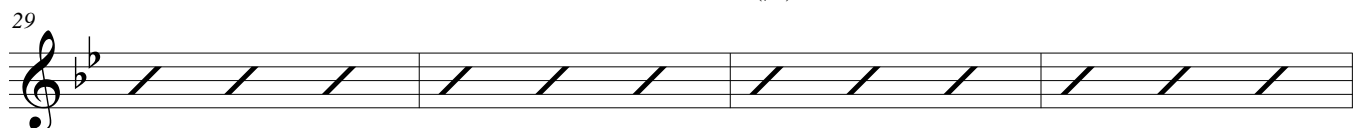
C m7

F7



D m7

G7(#5)

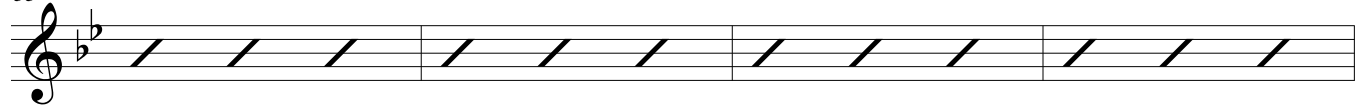


2

Cm7

F7

33



(Optional Vamp)

B \flat 7(#9)
B \flat maj7

B7(#9)
B \flat maj7/F

B \flat 7(#9)
B \flat maj7

B7(#9)
B \flat maj7/F

37

