

Technical Studies

Camden Hughes

1 Major (1, 2, 3, 4, 5, 6, 7, 8)

2 Natural Minor, Aeolian Mode (b3, b6, b7)

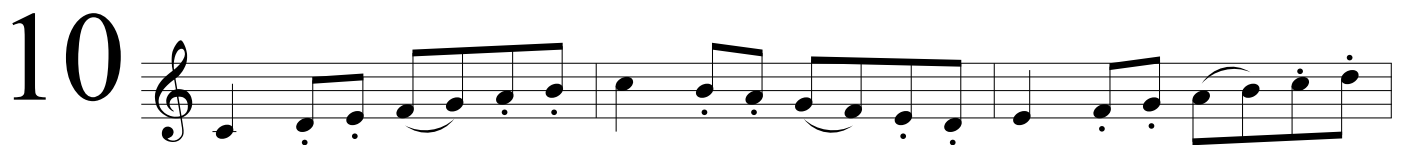
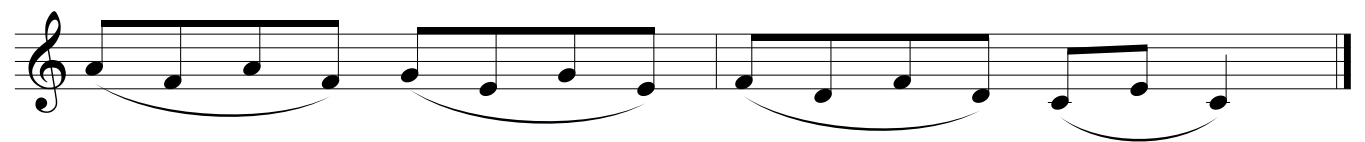
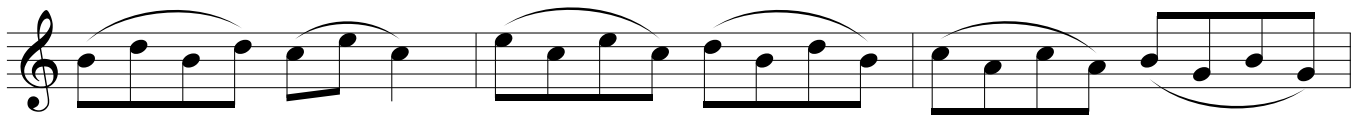
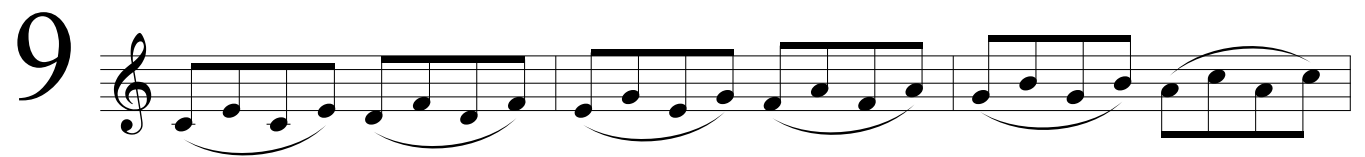
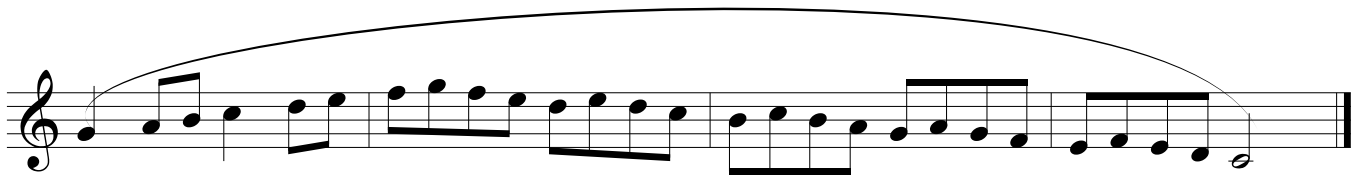
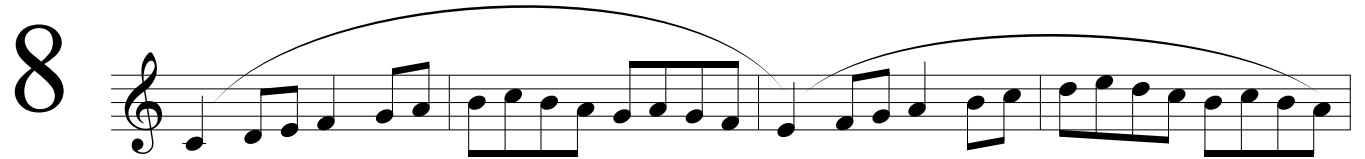
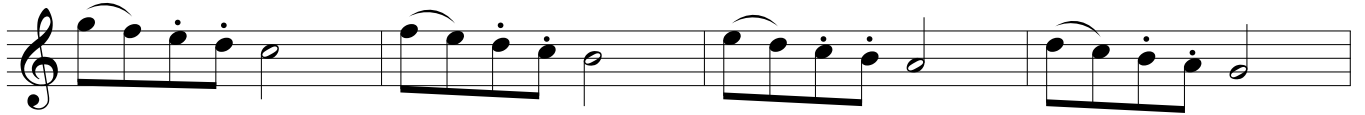
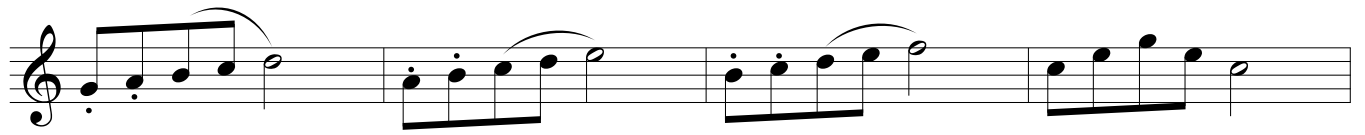
3 Harmonic Minor (b3, b6, ♯7)

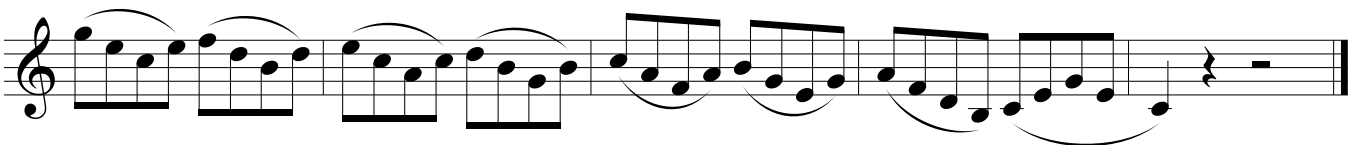
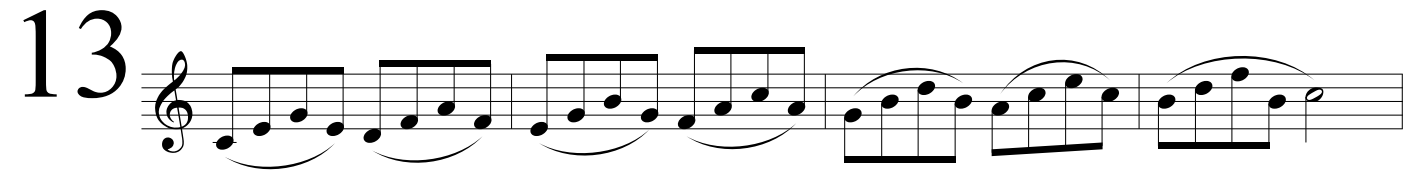
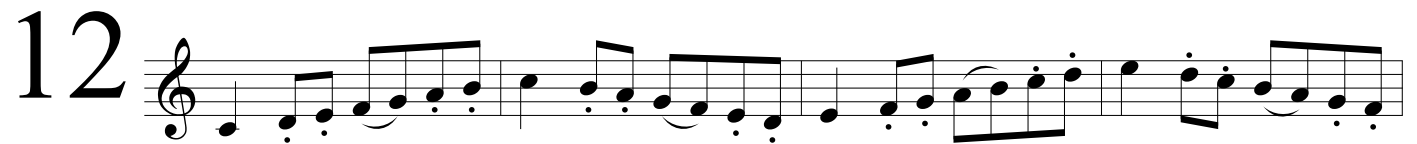
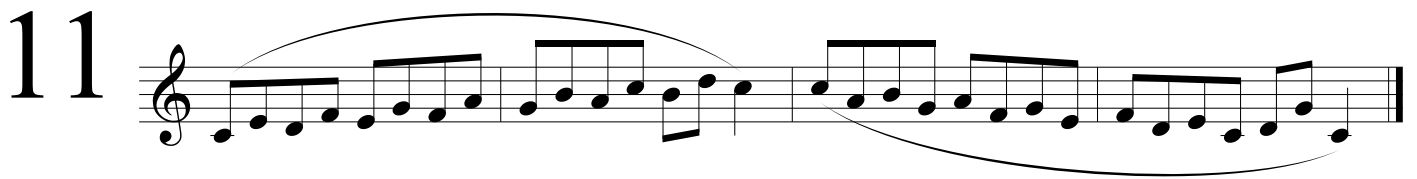
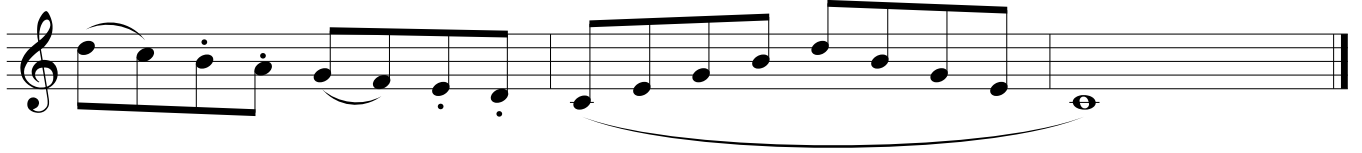
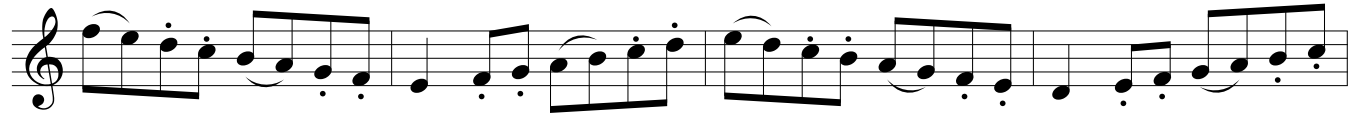
4 Melodic Minor (b3, ♯6, ♯7 ascending, natural minor descending)

5 Dorian Minor Mode (b3, ♯6, b7)

6

7





Modes-Brightest to Darkest

14

Lydian Mode

Ionian Mode (Major Scale)

Musical notation for Lydian Mode and Ionian Mode (Major Scale) in treble clef. The Lydian mode starts with a sharp on the fourth degree, and the Ionian mode is the standard major scale.

Mixolydian Mode

Dorian Mode

Musical notation for Mixolydian Mode and Dorian Mode in treble clef. The Mixolydian mode has a flat on the seventh degree, and the Dorian mode has flats on the second and seventh degrees.

Aeolian Mode (Natural Minor)

Phrygian

Musical notation for Aeolian Mode (Natural Minor) and Phrygian mode in treble clef. The Aeolian mode is the natural minor scale, and the Phrygian mode has a flat on the second degree.

Locrian

Ionian Mode (Major Scale)

Musical notation for Locrian mode and Ionian Mode (Major Scale) in treble clef. The Locrian mode has flats on the second, third, sixth, and seventh degrees.

15

Major Triad

Minor Triad

Diminished Triad

Augmented Triad

Musical notation for Major Triad, Minor Triad, Diminished Triad, and Augmented Triad in treble clef. Each triad is shown as a three-note chord with a slur underneath.

Major 7th Arpeggio

Dominant 7th Arp.

Minor 7th Arp.

Musical notation for Major 7th Arpeggio, Dominant 7th Arpeggio, and Minor 7th Arpeggio in treble clef. Each arpeggio is shown as a four-note chord with a slur underneath.

Half-Diminished Arp.

Diminished Arp.

Major 9 Arp.

Dominant 9 Arp.

Musical notation for Half-Diminished Arpeggio, Diminished Arpeggio, Major 9 Arpeggio, and Dominant 9 Arpeggio in treble clef. Each arpeggio is shown as a five-note chord with a slur underneath.

Minor 9 Arp.


Half-Diminished 9 Arp.

Musical notation for Minor 9 Arpeggio and Half-Diminished 9 Arpeggio in treble clef. Each arpeggio is shown as a six-note chord with a slur underneath. Measure numbers 144 and 148 are indicated at the start of the lines.

Diminished Add 9th Arp.

Major Triad (up to 8va)

Musical notation for Diminished Add 9th Arpeggio and Major Triad (up to 8va) in treble clef. Each arpeggio is shown as a six-note chord with a slur underneath. Measure number 148 is indicated at the start of the line.

16  Musical notation for exercise 16, first staff. It begins with a treble clef and a key signature of one flat. The melody consists of eighth notes with slurs, starting on a middle C and moving up and then down.

 Musical notation for exercise 16, second staff. It continues the melody from the first staff, featuring eighth notes with slurs and some beamed eighth notes. Musical notation for exercise 16, third staff. It concludes the exercise with eighth notes and a final half note, ending with a double bar line.

17  Musical notation for exercise 17. It begins with a treble clef and a key signature of one flat. The melody consists of eighth notes with slurs, starting on a middle C and moving up and then down.