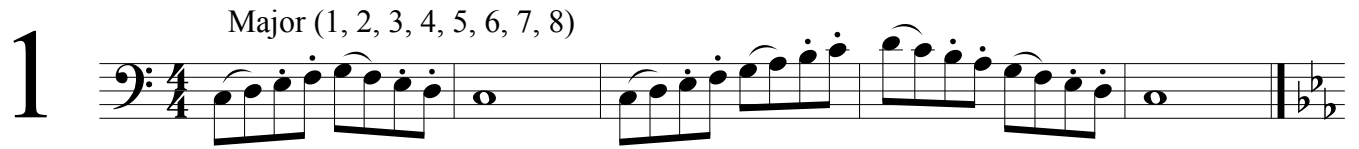


Technical Studies

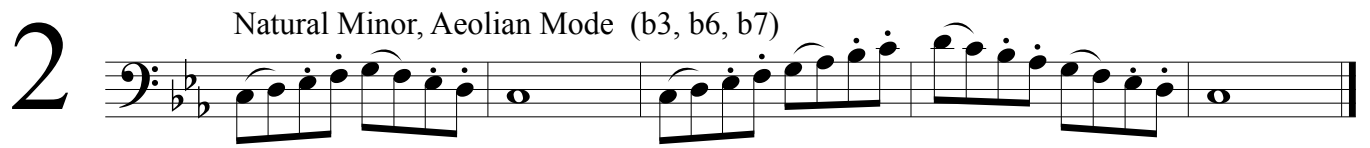
Bass Clef

Camden Hughes

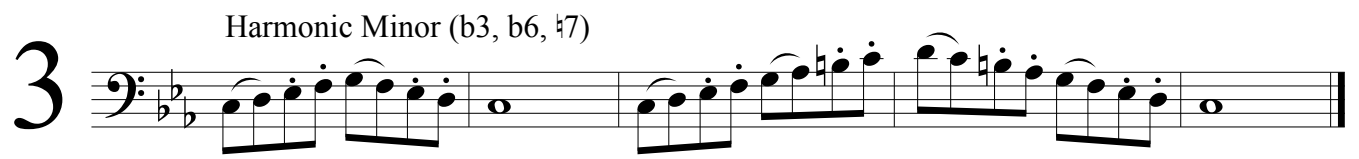
1 Major (1, 2, 3, 4, 5, 6, 7, 8)



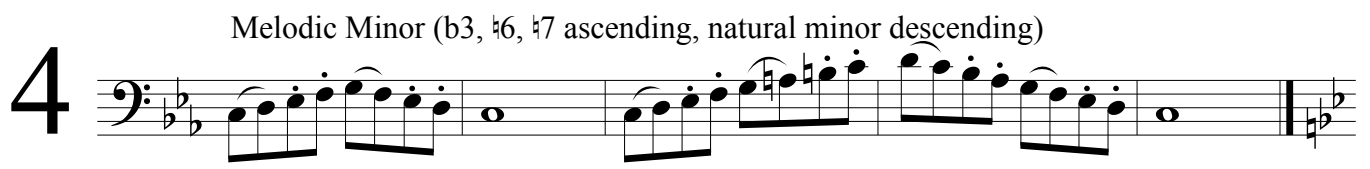
2 Natural Minor, Aeolian Mode (b3, b6, b7)



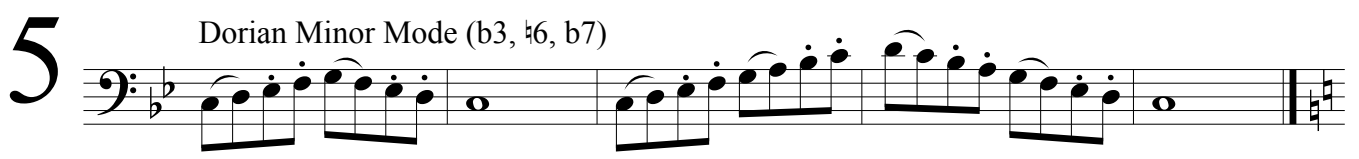
3 Harmonic Minor (b3, b6, #7)



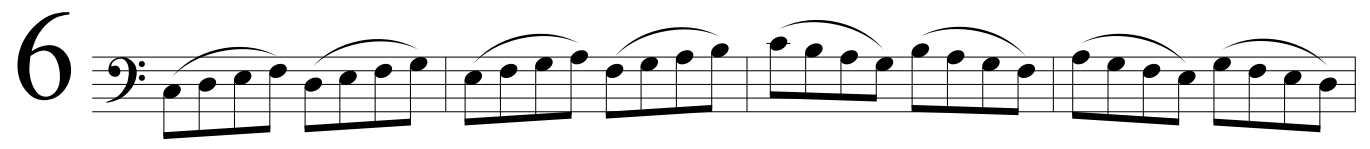
4 Melodic Minor (b3, #6, #7 ascending, natural minor descending)



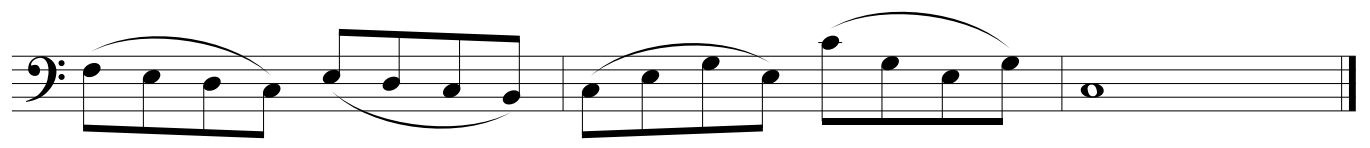
5 Dorian Minor Mode (b3, #6, b7)



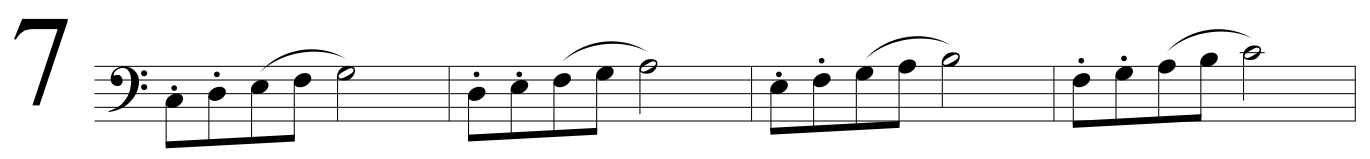
6

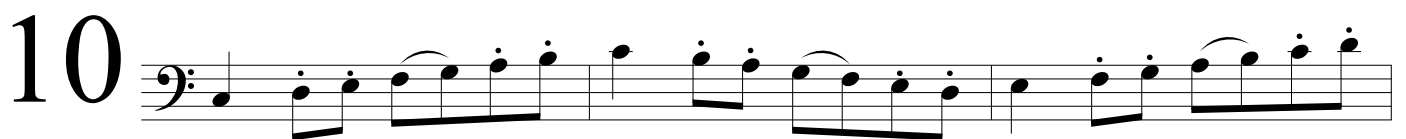
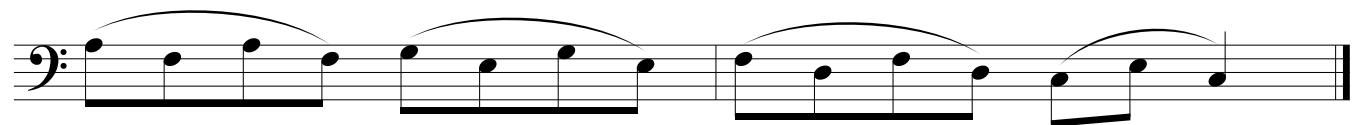
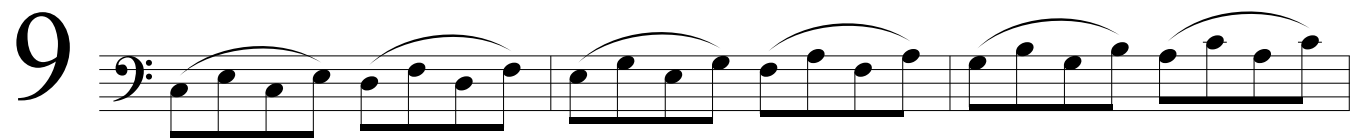
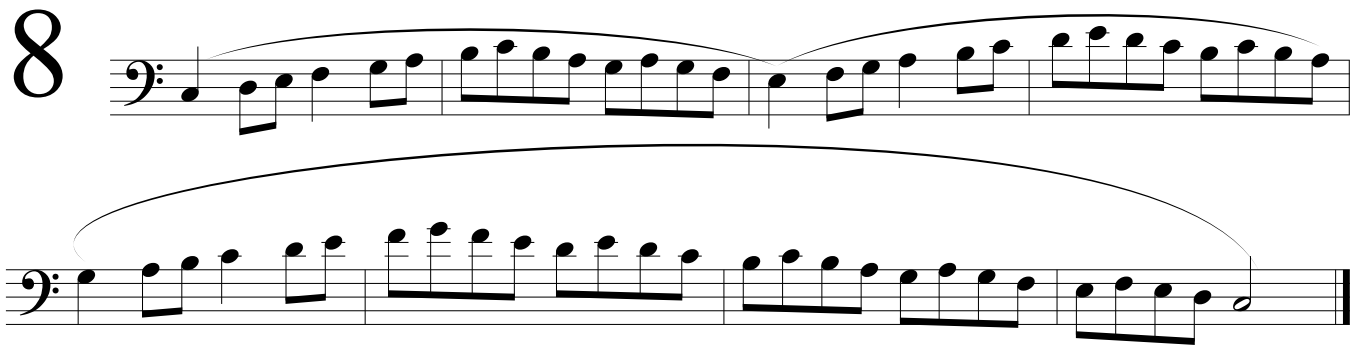
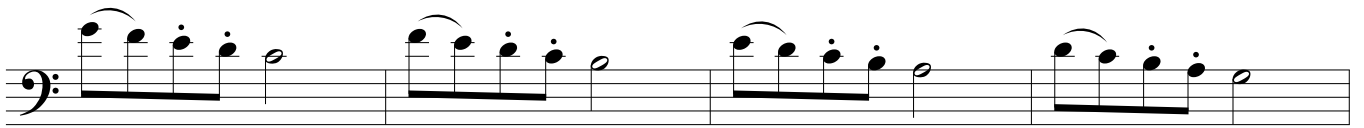
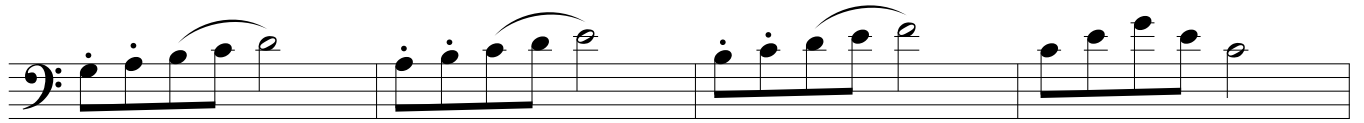


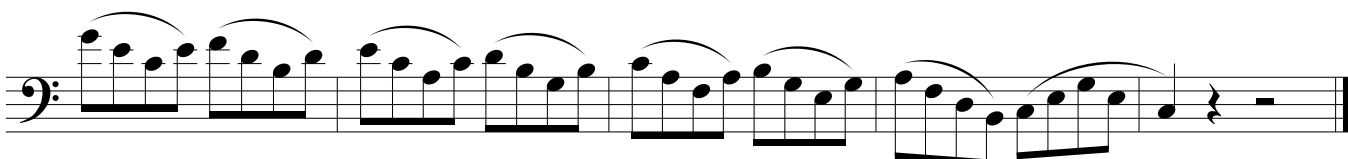
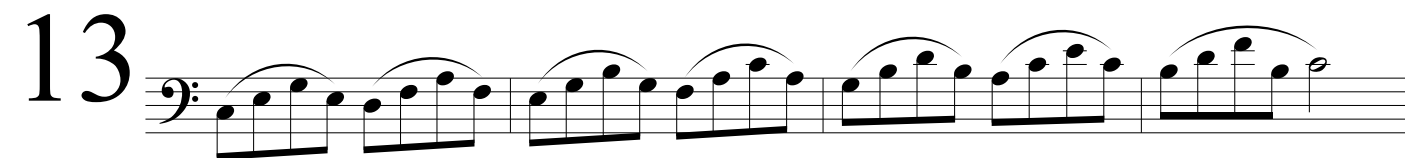
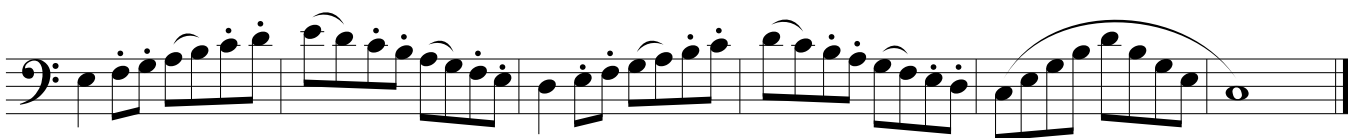
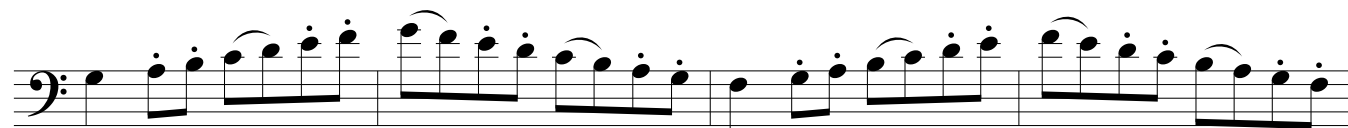
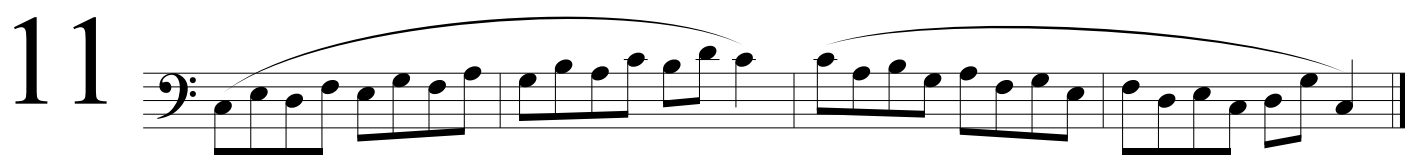
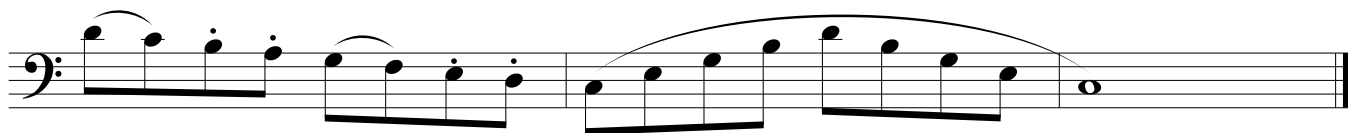
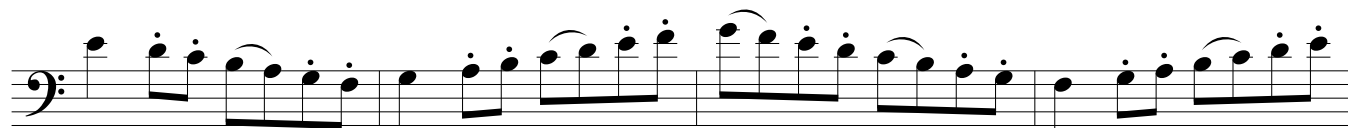
7



7







Modes-Brightest to Darkest

14 Lydian Mode Ionian Mode (Major Scale)

Mixolydian Mode Dorian Mode

Aeolian Mode (Natural Minor) Phrygian

Locrian Ionian Mode (Major Scale)

15 Major Triad Minor Triad Diminished Triad Augmented Triad

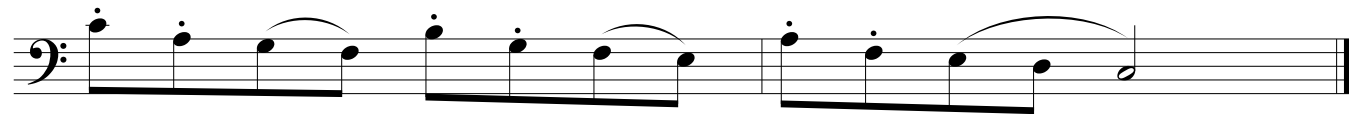
Major 7th Arpeggio Dominant 7th Arp. Minor 7th Arp.

Half-Diminished Arp. Diminished Arp. Major 9 Arp. Dominant 9 Arp.

Minor 9 Arp. Half-Diminished 9 Arp. Diminished 7th Add 9 Arp. Major Triad (up to 8va)

144

16



17

